



## Vesl Oils

Arvada, CO 80002  
bobby@vesloils.com  
720-827-4494

## Sample 433-092421-005

25mg CBG Gummy- Tropical

Batch/Lot # VOM.01.CBG

Sample Submitted: 09-24-2021; Report Date: 09-25-2021

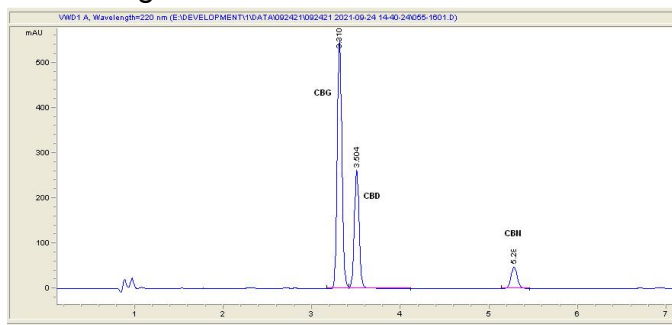
nullSample Unit Size: 3.45 g

## 25mg CBG Gummy- Tropical

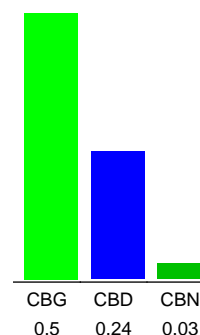
Edible: Candy

Batch/Lot # VOM.01.CBG

### Chromatogram



### Cannabinoid Profile



### Cannabinoid Profile by HPLC

**0.00%**  
Calculated THC Yield

**0.24%**  
Calculated CBD Yield

**0.77%**  
Total Cannabinoids

Cannabinoid	% wt	mg/unit
CBG	0.5	17.26
CBD	0.24	8.285
CBN	0.03	1.036
<b>Total Cannabinoids</b>	<b>0.77</b>	<b>26.6</b>
<b>Calculated THC Yield</b>	<b>0.00</b>	<b>0.00</b>
<b>Calculated CBD Yield</b>	<b>0.24</b>	<b>8.28</b>
Calculated Maximum THC Yield = THC + 0.877 * THCA		
Calculated Maximum CBD Yield = CBD + 0.877 * CBDA		

### Marin Analytics, LLC

250 Bel Marin Keys Blvd, Suite D4  
Novato, CA 94949

415-936-6477 / sarabiancalana1@gmail.com

**Sara Biancalana**  
Chief Scientist

This sample has been tested by Marin Analytics, LLC using valid testing methodologies and a quality system. Values reported relate only to the sample tested. Marin Analytics, LLC makes no claims as to the efficacy, safety or other risks associated with any detected or non-detected levels of any compounds reported herein. This Certificate shall not be reproduced except in full, without the written approval of Marin Analytics, LLC.